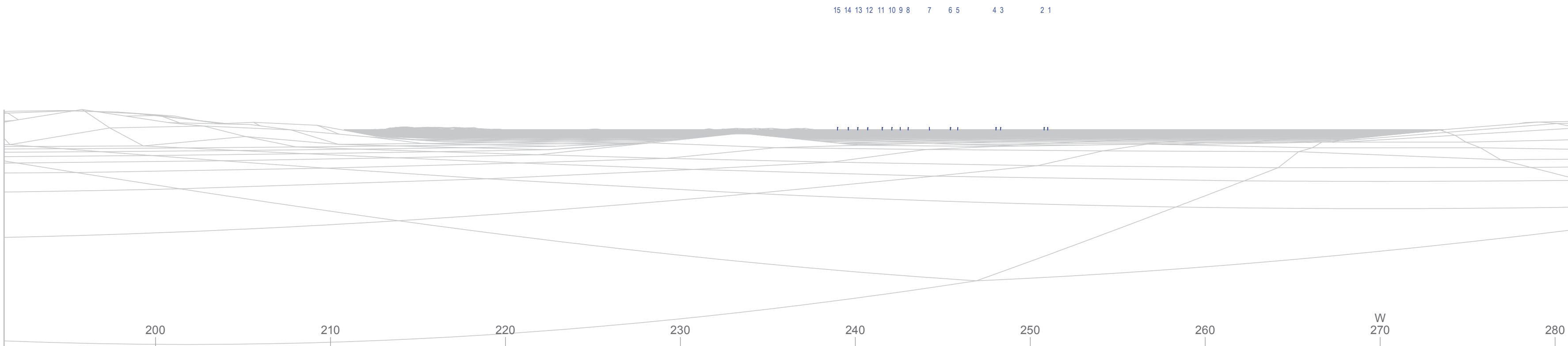




EXISTING VIEW



WIREFRAME VIEW

West Islay Tidal Project

FIGURE 8.4.2

Viewpoint 1
View south west from Portnahaven (Queen St.)

WIREFRAME VISUALISATION 8.4.2A

Viewpoint Information

Grid Reference	116547E 652220N
Ground Height	6m AOD
Angle of View	90°
Viewing Distance	300m

Layout Information

Based on Layout	LITE002.WFL
TEC Height ⁴	16m above MSL / 21m above LAT

Nearest Visible TEC	5562m
Number of TECs visible ¹	15
TEC visibility ²	239° to 251°

Photography Information

Camera	Digital SLR focal length 50mm
Viewer Height	2m
Photography date	24/10/2012
Photography time	10:00

NOTES:

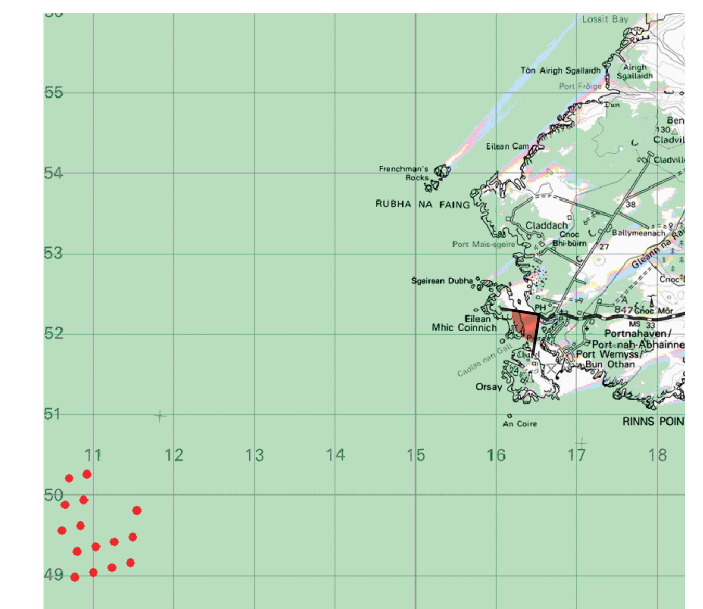
- 1) Applies to the wireframe only and ignores screening effects of woodland and other intervening objects.
- 2) All directions given as bearings relative to Grid North (BNG).
- 3) This visualisation has been produced using current best practice methodology. It aims to provide a realistic impression of the proposed development subject to the limitations of those photographic, IT and printing technologies used in its production.
- 4) This visualisation has been calculated using Ordnance Survey terrain data which is based on mean sea-level (MSL). TEC Height is also specified in relation to lowest astronomical tide (LAT).

HOW TO USE THIS VISUALISATION:

This visualisation is a cylindrical projection panorama: Hold this sheet from your eyes at the viewing distance noted above and curve the image through approximately 90° and turn head to view. Alternatively, the visualisation can be laid flat and viewed by scanning left or right parallel to the sheet maintaining the correct viewing distance between your eye and the page.

This visualisation is a tool for assessment and is best used for comparison in the field from the viewpoint location noted. It cannot be considered a substitute for visiting the viewpoint location.

Location Plan



Map scale = 1:100 000 extracted from ZTV to blade tip

Date	By	Paper	QA	Rev
Jan-13	LMR	297x610mm	TE	-



EXISTING VIEW

West Islay Tidal Project

FIGURE 8.4.3

Viewpoint 2
View west from Port Wemyss

WIREFRAME VISUALISATION 8.4.3A

Viewpoint Information

Grid Reference	117052E 651864N
Ground Height	24m AOD
Angle of View	90°
Viewing Distance	300mm

Layout Information

Based on Layout	LITE002.WFL
TEC Height ⁴	16m above MSL / 21m above LAT

Nearest Visible TEC	5887m
Number of TECs visible ¹	15
TEC visibility ²	244° to 255°

Photography Information

Camera	Digital SLR focal length 50mm
Viewer Height	2m
Photography date	24/10/2012
Photography time	10:30

NOTES:

- 1) Applies to the wireframe only and ignores screening effects of woodland and other intervening objects.
- 2) All directions given as bearings relative to Grid North (BNG).
- 3) This visualisation has been produced using current best practice methodology. It aims to provide a realistic impression of the proposed development subject to the limitations of those photographic, IT and printing technologies used in its production.
- 4) This visualisation has been calculated using Ordnance Survey terrain data which is based on mean sea-level (MSL). TEC Height is also specified in relation to lowest astronomical tide (LAT).

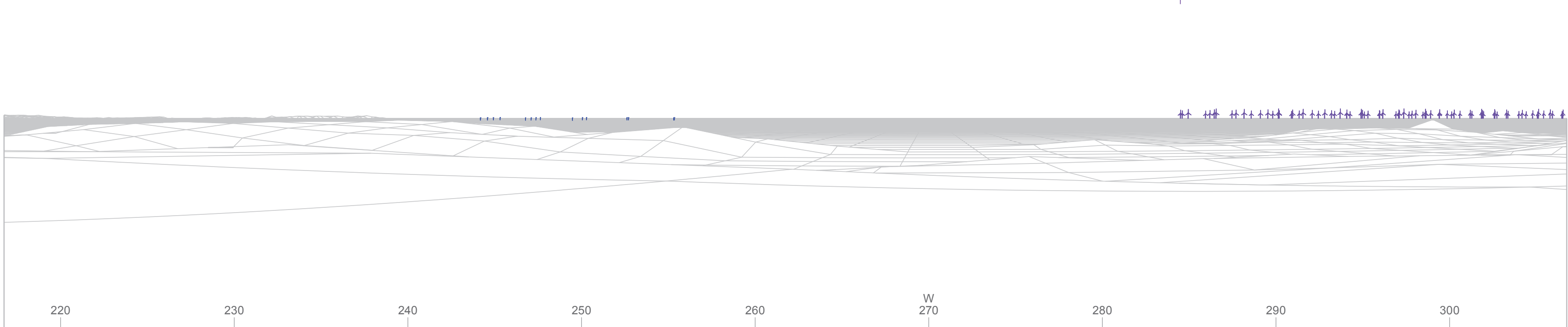
HOW TO USE THIS VISUALISATION:

This visualisation is a cylindrical projection panorama: Hold this sheet from your eyes at the viewing distance noted above and curve the image through approximately 90° and turn head to view. Alternatively, the visualisation can be laid flat and viewed by scanning left or right parallel to the sheet maintaining the correct viewing distance between your eye and the page.

This visualisation is a tool for assessment and is best used for comparison in the field from the viewpoint location noted. It cannot be considered a substitute for visiting the viewpoint location.

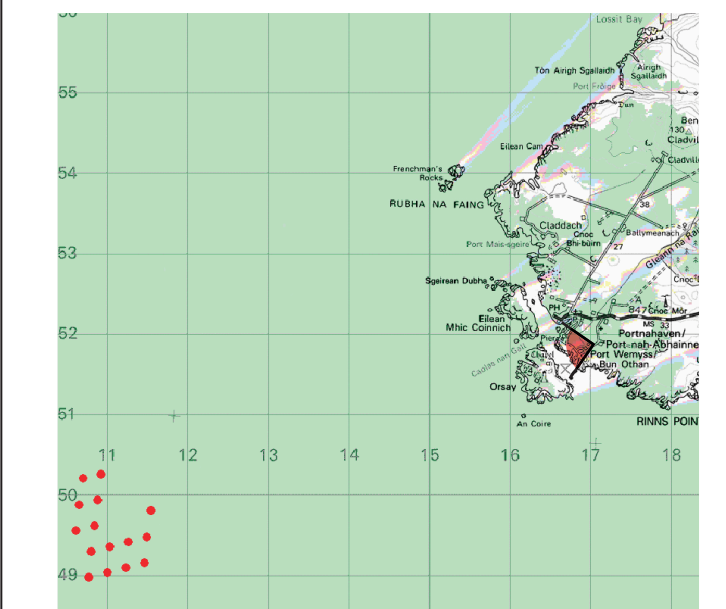
15 14 13 12 11 10 9 8 7 6 5 4 3 2 1

Islay Offshore Wind Farm: indicative layout based on publically-available Scoping Document



WIREFRAME VIEW

Location Plan



Map scale = 1:100 000 extracted from ZTV to blade tip

Date	By	Paper	QA	Rev
Jan-13	LMR	297x610mm	TE	-

Reproduced from Ordnance Survey digital map data © Crown Copyright 2012. All rights reserved.



EXISTING VIEW

West Islay Tidal Project

FIGURE 8.4.4

Viewpoint 3
View south west from Local Road, Claddach

WIREFRAME VISUALISATION 8.4.4A

Viewpoint Information

Grid Reference	116227E 653542N
Ground Height	31m AOD
Angle of View	90°
Viewing Distance	300m

Layout Information

Based on Layout	LITE002.WFL
TEC Height ⁴	16m above MSL / 21m above LAT

Nearest Visible TEC	5997m
Number of TECs visible ¹	15
TEC visibility ²	227° to 239°

Photography Information

Camera	Digital SLR focal length 50mm
Viewer Height	2m
Photography date	24/10/2012
Photography time	11:30

NOTES:

- 1) Applies to the wireframe only and ignores screening effects of woodland and other intervening objects.
- 2) All directions given as bearings relative to Grid North (BNG).
- 3) This visualisation has been produced using current best practice methodology. It aims to provide a realistic impression of the proposed development subject to the limitations of those photographic, IT and printing technologies used in its production.
- 4) This visualisation has been calculated using Ordnance Survey terrain data which is based on mean sea-level (MSL). TEC Height is also specified in relation to lowest astronomical tide (LAT).

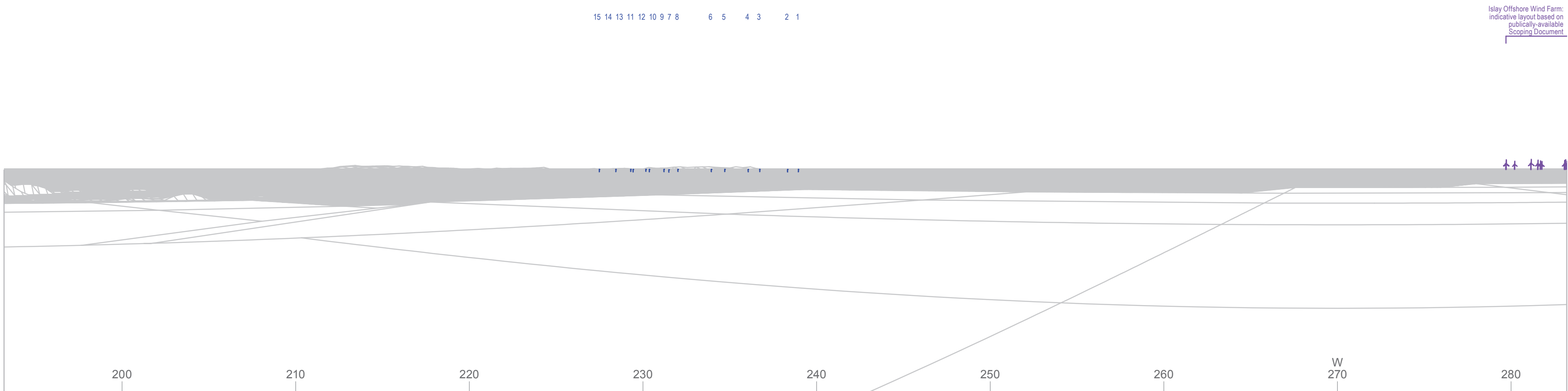
HOW TO USE THIS VISUALISATION:

This visualisation is a cylindrical projection panorama: Hold this sheet from your eyes at the viewing distance noted above and curve the image through approximately 90° and turn head to view. Alternatively, the visualisation can be laid flat and viewed by scanning left or right parallel to the sheet maintaining the correct viewing distance between your eye and the page.

This visualisation is a tool for assessment and is best used for comparison in the field from the viewpoint location noted. It cannot be considered a substitute for visiting the viewpoint location.

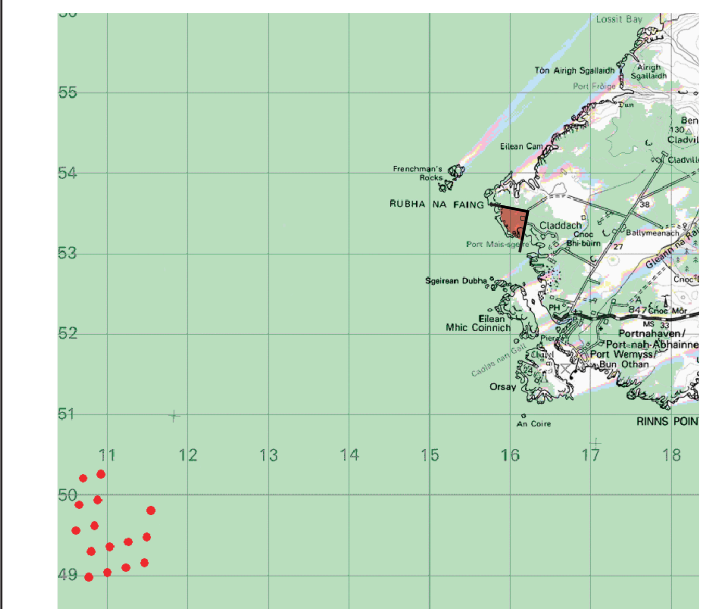
15 14 13 11 12 10 9 7 8 6 5 4 3 2 1

Islay Offshore Wind Farm:
indicative layout based on
publically-available
Scoping Document



WIREFRAME VIEW

Location Plan



Map scale = 1:100 000 extracted from ZTV to blade tip

Date	By	Paper	QA	Rev
Jan-13	LMR	297x610mm	TE	-

Reproduced from Ordnance Survey digital map data © Crown Copyright 2012. All rights reserved.

ITE-004G LVIA Existing V&WFs.indd